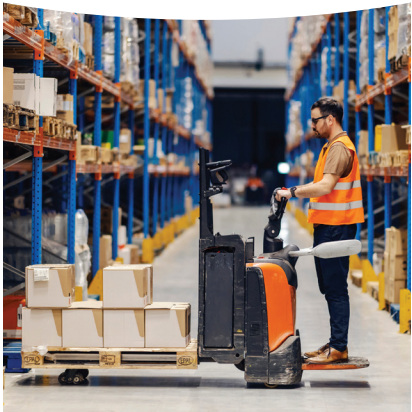
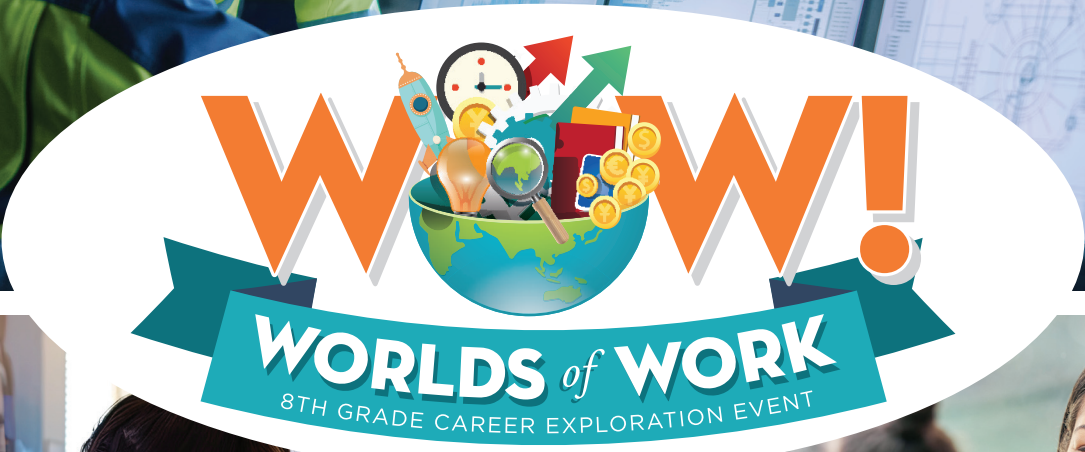




2024



# Welcome to the WoW!

## Dear Families and Guardians,

Local Career and Technical Education administrators and participating school divisions believe it is imperative that students be exposed to as many careers as possible during the impressionable years of middle school, a time where they begin to create personalized academic and career plans that will map out potential courses through their first two years of high school. At this age, if students can explore options in different career pathways and identify if they like or do not like a particular path, then they will be in a position to make better academic and work-based choices focusing on their future goals. It is our intention that the WoW! Expo provide experiences in which we can start to frame those conversations. A student's dreams and passions may change, but having an understanding of what is possible, especially locally, is key.

Please take some time with your child to go over the information in this booklet. We have focused on 10 Worlds of Work, based on the 16 Career Clusters identified by the Virginia Department of Education. Each World lists careers within a specific industry, required education, and potential earnings.

We hope you find this event worthwhile and that you will continue to encourage your child to explore. For more information, please visit our website, [ExploreTheWoW.com](http://ExploreTheWoW.com)

Sincerely,

Your Local Career and Technical Education Administrators

## Table of Contents

Agriculture World	4 - 5
Communications World	6 - 7
Construction World	8 - 9
Finance World	10 - 11
Health Science World	12 - 13
Hospitality & Tourism World	14 - 15
Information Technology World	16 - 17
Manufacturing World	18 - 19
Public Service World	20 - 21
Transportation & Logistics World	22 - 23

**What's next?**  
**Life after**  
**WoW!**



## 2024 WoW! Exhibitors

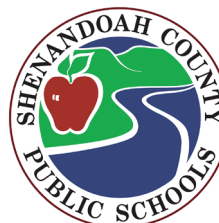
Advance Auto Parts / Carquest Auto Parts • American Woodmark • Annandale Millwork & Allied Systems / Frogale Lumber Supply • Ashworth Brothers, Inc. • Barrett Machine, Inc. • Belle Grove Plantation • Berryville Family Chiropractic • Berryville Graphics • Blauch Brothers, Inc. • Bowman Andros Products • Carmeuse • Cedar Creek Battlefield Foundation • City National Bank • City of Winchester - Departments of Emergency Management, Fire & Rescue, GIS, Information Technology, Police, and Public Services • Clarke County Department of Fire-EMS and Emergency Management • Clean Water of VA • Continental • Cornet, Inc. • FASTSIGNS • Federal Bureau of Investigation • First Bank Virginia • First Tee Shenandoah Valley • FNB Bank, Inc. • Fortessa Tableware Solutions • Frederick County Fire and Rescue / Fire Marshal's Office • Frederick County Sheriff's Office • Frederick Water • Holtzman Oil & Propane • Howard Shockey & Sons, Inc. • International Brotherhood of Electrical Workers Local 26 • Johnny Blue • Kennametal, Inc. • Kingspan Insulation • Laurel Ridge Community College • Marlow Motor Company, Inc. • Museum of the Shenandoah Valley • Parisi Speed School at Valley Health • Rappahannock Electric Cooperative • Riddleberger Brothers, Inc. • Roman's Hair Empire & Beauty Academy • Shenandoah University School of Pharmacy • Shenandoah Valley Financial Services • Shentel • Southeastern Container • The Home Depot - Supply Chain • The River 95.3 • Thermo Fisher Scientific • Toray Plastics (America) • Trex Company • Truist • United Bank • Valley Health Pharmacists • Valley Health Professional Development • Valley Medical Transport • Virginia Association of Surveyors • Virginia Cooperative Extension (VCE), part of Virginia Tech • Virginia State Parks • Virginia State Police • Warren County Sheriff's Office • White House Foods • Winchester Equipment Co. • Winchester Regional Airport



**Worlds of Work** is a career exploration event managed by Laurel Ridge Community College Career Pathways Consortium, in partnership with Northern Shenandoah Valley Regional Commission, Frederick County Economic Development Authority, Winchester Economic Development Authority, Clarke County Economic Development, Page County Economic Development & Tourism, Shenandoah County Economic Development, and Warren County Economic Development Authority.



# Thank You Event Sponsors!



# Agriculture

## Overview

Agriculture is Virginia's largest private industry.

The industry has an economic impact of nearly \$106 billion annually, provides more than 490,000 jobs in the Commonwealth, and has \$55 billion in value-added impact.

Every job in agriculture and forestry supports 1.6 jobs elsewhere in Virginia's economy.

Source: 2022 The Economic Impact of Virginia's Agriculture and Forest Industries, Weldon Cooper Center for Public Service, University of Virginia



**How much money will I earn?** Your salary or hourly wage depends on a lot of factors, like the education you have, your skills, previous experience in the industry, attitude, and work ethic.

The following chart shares a snapshot of careers, average wages, and education needed.

	Average Annual Wages	Hourly Entry	Hourly Experienced	Education*
Agricultural Equipment Operators	\$40,300	\$15.79	\$21.18	HS
Animal Caretakers	\$33,200	\$13.13	\$17.37	HS
Biological Technicians	\$51,800	\$17.95	\$28.37	4C
Environmental Engineers	\$101,100	\$32.60	\$56.59	4C
Farmers, Ranchers, and Other Agricultural Managers	\$73,300	\$27.20	\$39.28	HS
Farmworkers and Laborers, Crop, Nursery, and Greenhouse	\$33,200	\$13.92	\$17.01	HS
Farmworkers, Farm, Ranch, and Aquacultural Animals	\$38,600	\$13.52	\$21.10	HS
First-Line Supervisors of Farming, Fishing, and Forestry Workers	\$55,400	\$18.91	\$30.50	HS
Landscaping and Groundskeeping Workers	\$37,300	\$14.75	\$19.50	HS
Landscape Architects	\$76,900	\$25.47	\$42.69	HS
Veterinarians	\$124,000	\$34.28	\$72.25	DP
Veterinary Technologists and Technicians	\$44,200	\$16.16	\$23.79	CC
Veterinary Assistants and Laboratory Animal Caretakers	\$34,800	\$14.79	\$17.68	HS

\* HS: High School | PS: Post-Secondary Non-Degree Award | CC: Community College | 4C: Four-Year College | MD: Master's Degree | DP: Doctoral or Professional Degree  
Source: Worlds of Work service area via JobsEQ | 2024Q1





**Do you love:** Nature? • Sustainability? •  
Clean Energy? • Animals? • Farming? • Plants? • Biology?

**What it takes:** Physical fitness •  
Working in tough conditions • Determination

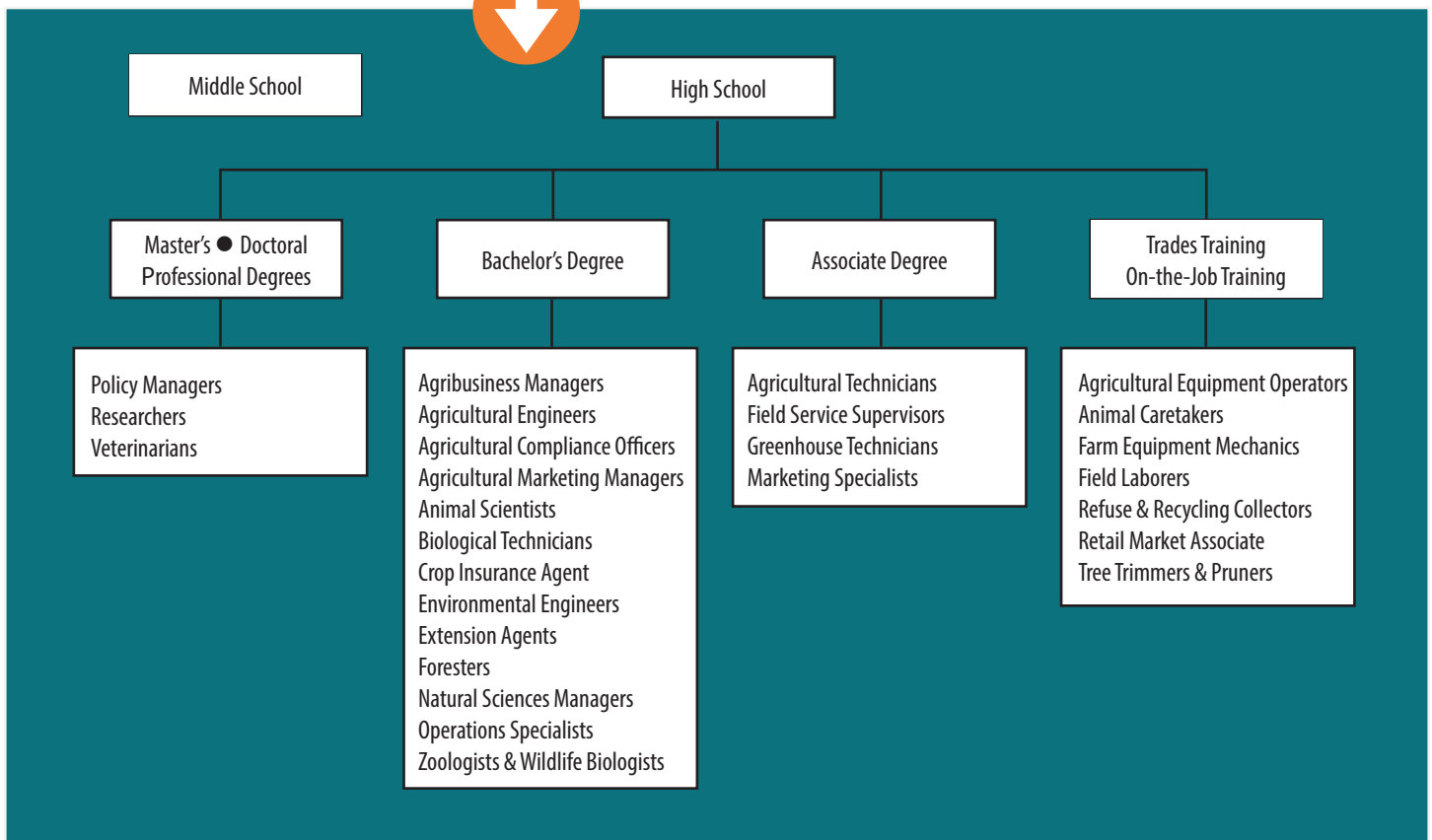


## Career Spotlight Farmers, Ranchers, and Agricultural Managers

Farmers, Ranchers, and Agricultural Managers plan, direct, or coordinate the management or operation of farms, ranches, greenhouses, aquacultural operations, nurseries, timber tracts, or other agricultural establishments. They may hire, train, and supervise farm workers or contract for services to carry out the day-to-day activities of the managed operation. Managers may engage in or supervise planting, cultivating, harvesting, and financial and marketing activities.

Source: U.S. Bureau of Labor Statistics

**How do I get there?** Each career has its own set of education and skill requirements.



## Exhibitors



# Communications

## Overview

Communications focuses on critical thinking, analysis, and practical skills essential to developing and implementing communication strategies that advance a company's goals and mission.

Communication programs of study may include crisis communication, communications law, digital and traditional marketing strategies, media relations, social media, strategic communication, emerging media, and writing.



**How much money will I earn?** Your salary or hourly wage depends on a lot of factors, like the education you have, your skills, previous experience in the industry, attitude, and work ethic.

The following chart shares a snapshot of careers, average wages, and education needed.

	Average Annual Wages	Hourly Entry	Hourly Experienced	Education*
Advertising Sales Agents	\$68,700	\$17.76	\$40.68	HS
Art Directors	\$108,700	\$31.73	\$62.49	4C
Editors	\$76,300	\$21.42	\$44.34	4C
Graphic Designers	\$58,800	\$18.61	\$33.10	4C
Interior Designers	\$64,300	\$20.03	\$36.33	4C
Market Research Analysts	\$76,700	\$21.49	\$44.58	4C
Meeting, Convention, and Event Planners	\$53,500	\$17.95	\$29.63	4C
Project Management Specialists	\$101,100	\$30.48	\$57.67	4C
Public Relations Managers	\$154,800	\$42.11	\$90.58	4C
Public Relations Specialists	\$76,100	\$21.34	\$44.18	4C
Sales Representatives of Services	\$81,800	\$20.08	\$48.97	HS
Web Developers	\$92,400	\$28.13	\$52.54	4C

\* HS: High School | PS: Post-Secondary Non-Degree Award | CC: Community College | 4C: Four-Year College | MD: Master's Degree | DP: Doctoral or Professional Degree  
Source: Worlds of Work service area via JobsEQ | 2024Q1





**Do you love:** Creativity? • The spotlight? •  
Working behind the scenes? • Writing? • Developing apps?

**What it takes:** Self-motivation •  
Strong communication skills • Writing skills

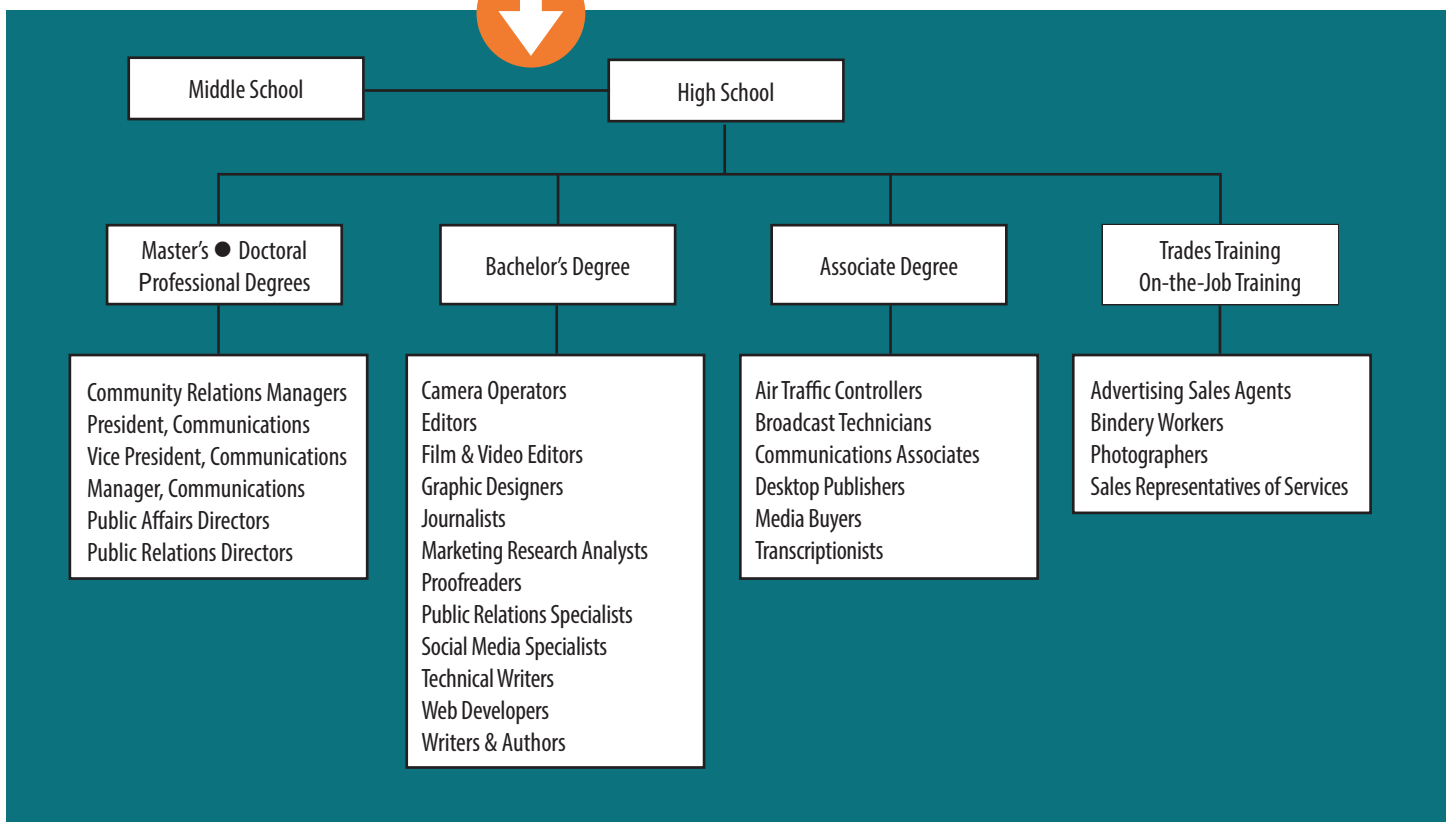


## Career Spotlight Market Research Analyst

Market research analysts study consumer preferences, business conditions, and other factors to assess potential sales of a product or service. They help companies understand what products people want, who will buy them, and at what price.

Source: U.S. Bureau of Labor Statistics

**How do I get there?** Each career has its own set of education and skill requirements.



## Exhibitors



# Construction

## Overview

A team of construction professionals built every structure, residential community, park, hospital, roadway, and shopping mall. Whether you dream of designing a new building or wielding a blowtorch on a construction crew, opportunities are available throughout the construction field for highly skilled, hardworking people.

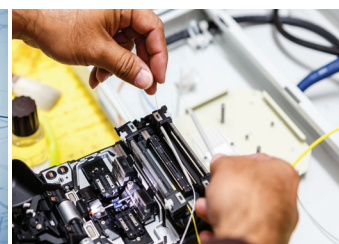


**How much money will I earn?** Your salary or hourly wage depends on a lot of factors, like the education you have, your skills, previous experience in the industry, attitude, and work ethic.

The following chart shares a snapshot of careers, average wages, and education needed.

	Average Annual Wages	Hourly Entry	Hourly Experienced	Education*
Carpenters	\$51,000	\$17.77	\$27.92	HS
Construction and Building Inspectors	\$71,800	\$23.42	\$40.07	HS
Construction Laborers	\$40,400	\$15.46	\$21.42	HS
Construction Managers	\$110,300	\$36.75	\$61.19	4C
Cost Estimator	\$72,200	\$21.62	\$41.29	4C
Electricians	\$64,100	\$20.39	\$36.04	HS
First-Line Supervisors of Construction Trades and Extraction Workers	\$72,400	\$25.45	\$39.46	HS
Heating, Air Conditioning, and Refrigeration Mechanics and Installers	\$57,600	\$20.17	\$31.45	PS
Insulation Workers, Floor, Ceiling, and Wall	\$44,500	\$15.43	\$24.41	HS
Operating Engineers and Other Construction Equipment Operators	\$50,500	\$18.53	\$27.18	HS
Painters, Construction and Maintenance	\$44,000	\$17.70	\$22.88	HS
Plumbers, Pipefitters, and Steamfitters	\$57,800	\$20.06	\$31.63	HS

\* HS: High School | PS: Post-Secondary Non-Degree Award | CC: Community College | 4C: Four-Year College | MD: Master's Degree | DP: Doctoral or Professional Degree  
Source: Worlds of Work service area via JobsEQ | 2024Q1





**Do you love:** Building? • Working with tools? • Drawing? • A sense of accomplishment?

**What it takes:** Strong math and science skills • Strong time management skills



## Career Spotlight Electrician

Electricians install, maintain, and repair electrical power, communications, lighting, and control systems in homes, businesses, and factories. Electricians will read blueprints or technical diagrams, install and maintain wiring, control, and lighting systems, inspect electrical components, such as transformers and circuit breakers, and identify electrical problems using a variety of testing devices. Electricians must follow state and local building regulations based on the National Electrical Code.

Source: U.S. Bureau of Labor Statistics

**How do I get there?** Each career has its own set of education and skill requirements.



## Exhibitors



# Finance

## Overview

If policy and figures make you tick, the Finance World may be for you! From banking, business financial management, insurance, and financial and investment planning, there are finance careers in every area of our economy.



**How much money will I earn?** Your salary or hourly wage depends on a lot of factors, like the education you have, your skills, previous experience in the industry, attitude, and work ethic.

The following chart shares a snapshot of careers, average wages, and education needed.

	Average Annual Wages	Hourly Entry	Hourly Experienced	Education*
Customer Service Representatives	\$41,300	\$14.60	\$22.46	HS
Financial and Investment Analysts and Financial Specialists	\$97,800	\$27.16	\$56.92	4C
Financial Managers	\$158,100	\$45.90	\$91.09	4C
First-Line Supervisors of Office and Administrative Support Workers	\$64,300	\$21.22	\$35.76	HS
Insurance Sales Agents	\$72,600	\$18.87	\$42.89	HS
Loan Interviewers and Clerks	\$46,200	\$18.53	\$24.06	HS
Loan Officers	\$84,300	\$23.92	\$48.84	4C
Personal Financial Advisors	\$109,500	\$23.28	\$67.33	4C
Purchasing Managers	\$136,600	\$44.56	\$76.20	4C
Securities, Commodities, and Financial Services Sales Agents	\$104,100	\$23.03	\$63.57	4C
Tellers	\$39,300	\$15.08	\$20.78	HS

\* HS: High School | PS: Post-Secondary Non-Degree Award | CC: Community College | 4C: Four-Year College | MD: Master's Degree | DP: Doctoral or Professional Degree  
Source: Worlds of Work service area via JobsEQ | 2024Q1





**Do you love:** Math and problem solving? •  
Providing excellent customer service?

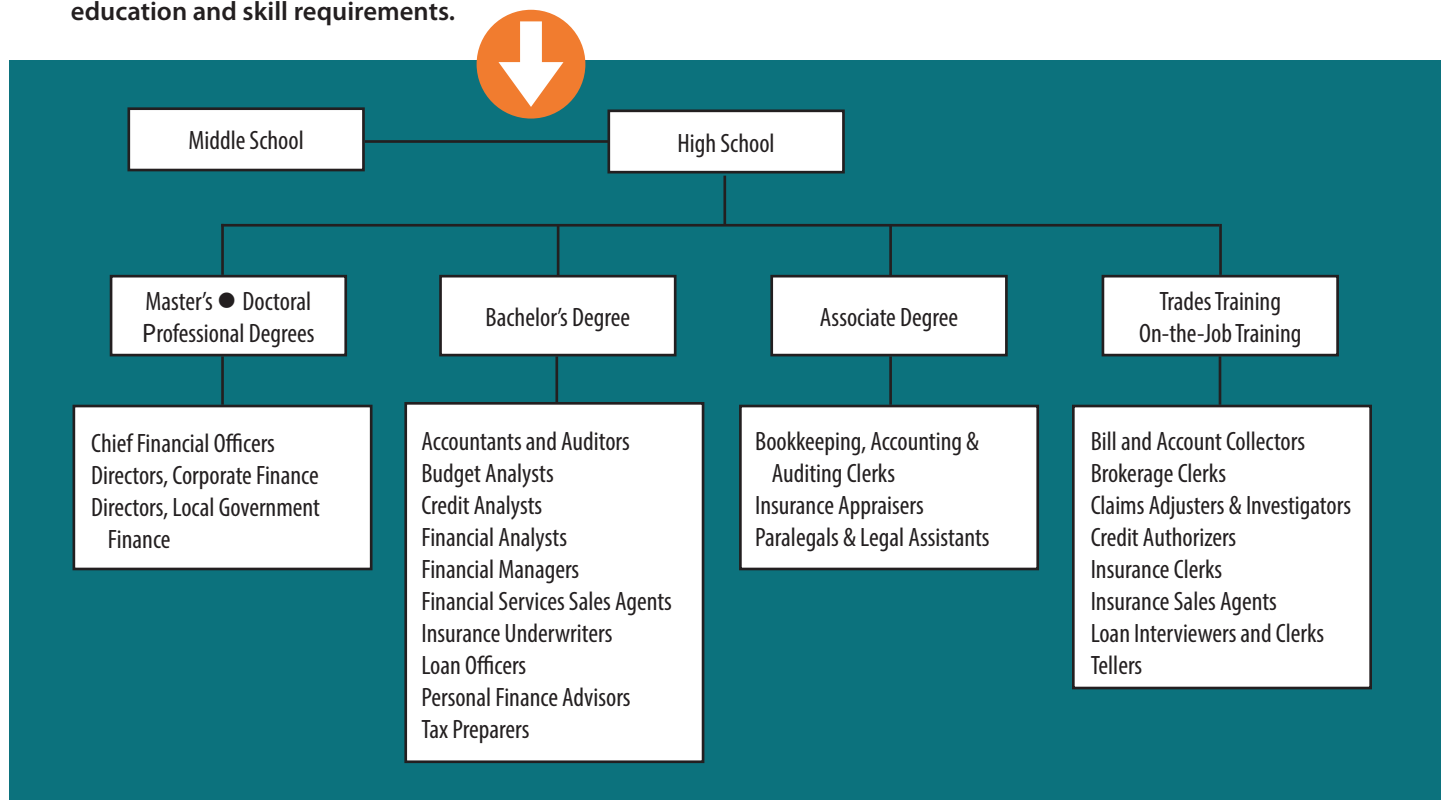
**What it takes:** Excellent math, organizational, and communication skills

## Career Spotlight Accountant/Auditor

Accountants and auditors prepare and examine financial records, identify potential areas of opportunity and risk, and provide solutions for businesses and individuals. They ensure that financial records are accurate, that financial and data risks are evaluated, and that taxes are paid properly. They also assess financial operations and work to help ensure that organizations run efficiently.

Source: U.S. Bureau of Labor Statistics

**How do I get there?** Each career has its own set of education and skill requirements.



## Exhibitors



# Health Science

## Overview

The health science industry is diverse, from practitioners, such as surgeons and dental hygienists, to support occupations, like medical transcriptionists and occupational therapy assistants.

The Healthcare and Social Assistance industry employs more than 550,000 individuals\* in Virginia.

\*JobsEQ 2024Q1

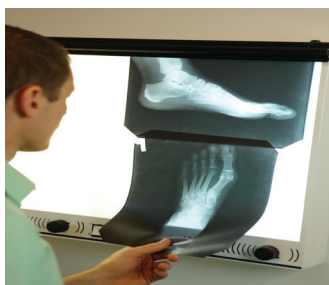


**How much money will I earn?** Your salary or hourly wage depends on a lot of factors, like the education you have, your skills, previous experience in the industry, attitude, and work ethic.

The following chart shares a snapshot of careers, average wages, and education needed.

	Average Annual Wages	Hourly Entry	Hourly Experienced	Education*
Childcare Workers	\$31,100	\$12.75	\$16.06	HS
Dental Assistants	\$44,400	\$16.70	\$23.64	PS
Home Health Aides	\$30,000	\$12.75	\$15.27	HS
Licensed Practical and Licensed Vocational Nurses	\$59,200	\$23.35	\$31.03	PS
Medical Assistants	\$41,100	\$17.11	\$21.07	PS
Medical Secretaries and Administrative Assistants	\$41,600	\$16.10	\$21.94	HS
Nursing Assistants	\$38,000	\$15.06	\$19.85	PS
Physical Therapists	\$96,800	\$37.87	\$50.84	DP
Psychiatrists	\$244,200	\$45.16	\$153.53	DP
Psychologists	\$97,700	\$28.14	\$56.39	MD
Registered Nurses	\$89,700	\$33.48	\$47.94	4C
Substance Abuse, Behavioral Disorder, and Mental Health Counselors	\$55,800	\$19.84	\$30.33	4C

\* HS: High School | PS: Post-Secondary Non-Degree Award | CC: Community College | 4C: Four-Year College | MD: Master's Degree | DP: Doctoral or Professional Degree  
Source: Worlds of Work service area via JobsEQ | 2024Q1





**Do you love:** Helping others? • Science and math? •  
The idea of healing the human body?

**What it takes:** Strong science, math, and computer skills • Attention to detail

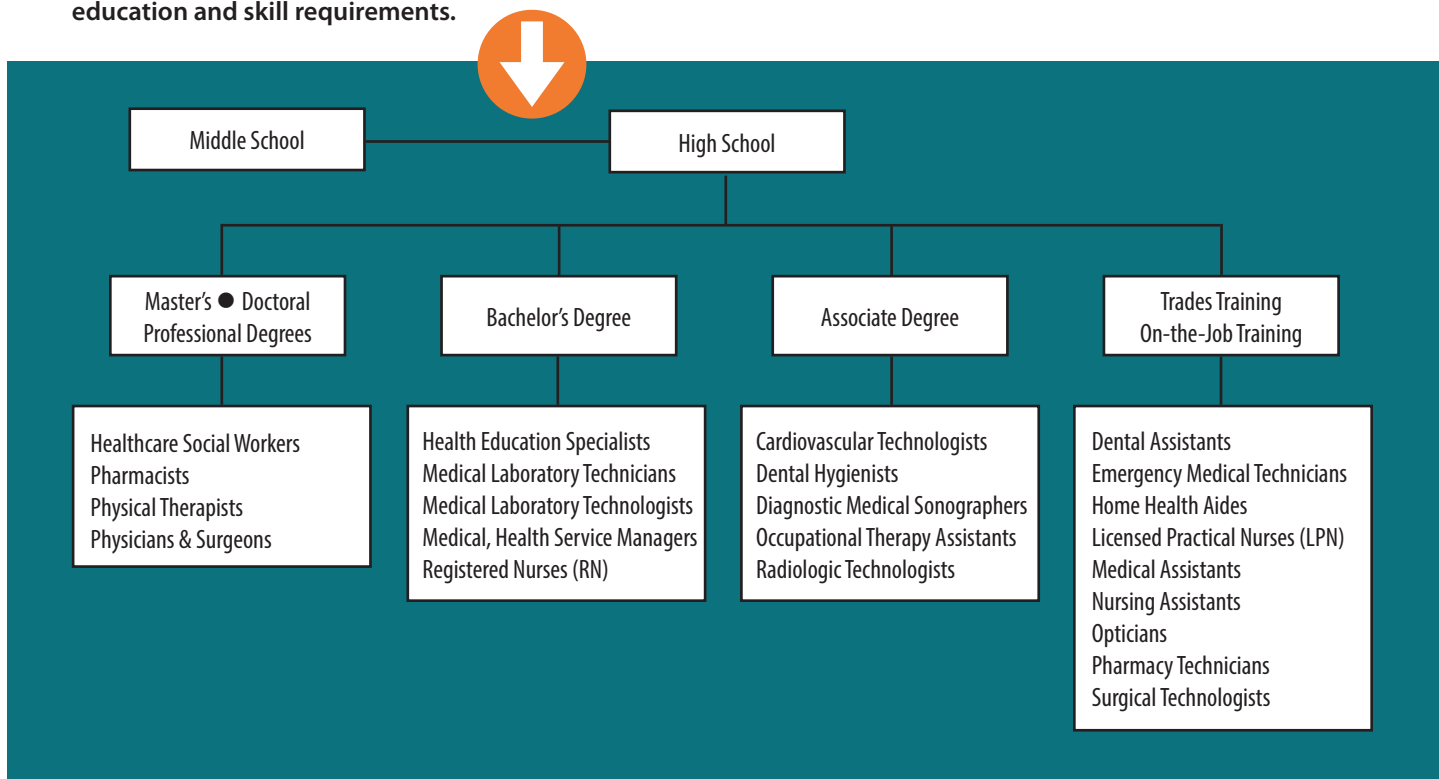


## Career Spotlight Registered Nurse

An RN must be licensed and have a Bachelor's of Science degree in nursing. Registered Nurses are responsible for coordinating and providing patient care; this includes, assessing patients' conditions, administration of medicines and treatments, operation and monitoring of medical equipment, analyzing and performing diagnostics tests, collaborating with physicians, and creating plans for patient care.

Source: U.S. Bureau of Labor Statistics

**How do I get there?** Each career has its own set of education and skill requirements.



## Exhibitors



# Hospitality & Tourism

## Overview

The folks that help plan travel, prepare culinary masterpieces, or organize an event put in long hours. They may work nights and weekends, but they have a rewarding career that is exciting and projects that always offer something different.



**How much money will I earn?** Your salary or hourly wage depends on a lot of factors, like the education you have, your skills, previous experience in the industry, attitude, and work ethic.

The following chart shares a snapshot of careers, average wages, and education needed.

	Average Annual Wages	Hourly Entry	Hourly Experienced	Education
Amusement and Recreation Attendants	\$28,300	\$12.53	\$14.14	HS
Cooks, Restaurant	\$33,600	\$13.41	\$17.50	HS
Fast Food and Counter Workers	\$29,700	\$12.73	\$15.08	HS
General and Operations Managers	\$117,800	\$28.22	\$70.88	4C
Hotel, Motel, and Resort Desk Clerks	\$30,100	\$13.02	\$15.21	HS
Landscaping and Groundskeeping Workers	\$37,300	\$14.75	\$19.50	HS
Maids and Housekeeping Cleaners	\$31,600	\$13.07	\$16.27	HS
Maintenance and Repair Workers, General	\$47,900	\$15.75	\$26.70	HS
Meeting, Convention, and Event Planners	\$53,500	\$17.95	\$29.63	4C
Museum Technicians and Conservators	\$52,500	\$16.34	\$29.70	4C
Recreation Workers	\$35,000	\$13.13	\$18.66	HS
Tour Guides	\$35,200	\$13.54	\$18.61	HS
Waiters and Waitresses	\$36,200	\$12.99	\$19.60	HS

\* HS: High School | PS: Post-Secondary Non-Degree Award | CC: Community College | 4C: Four-Year College | MD: Master's Degree | DP: Doctoral or Professional Degree  
Source: Worlds of Work service area via JobsEQ | 2024Q1





**Do you love:** Helping others? • Creativity? • Planning? • Details?

**What it takes:** Positive attitude • Strong attention to detail • Strong organization

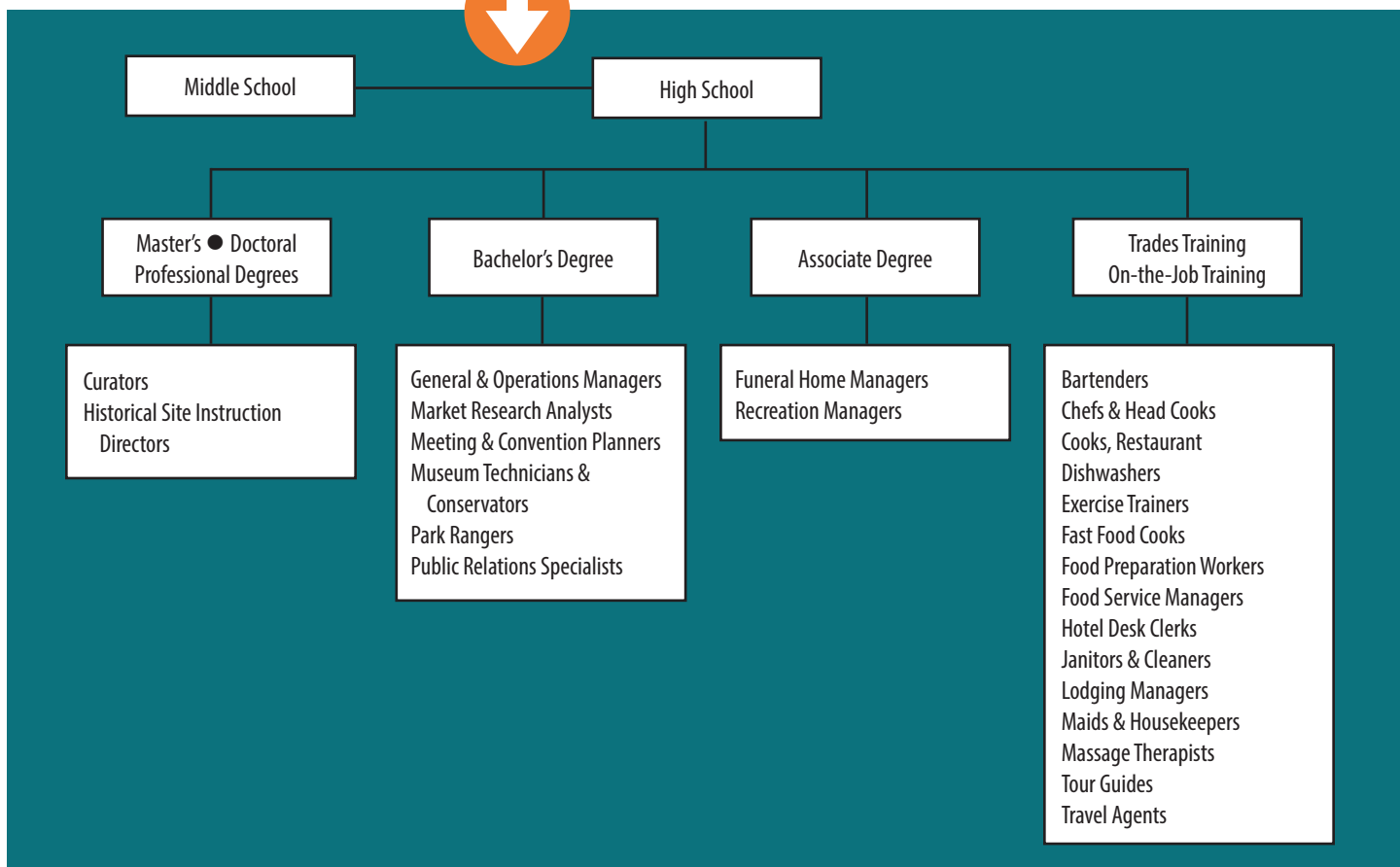


## Career Spotlight Food Service Managers

Food Service Managers plan, direct, or coordinate activities of an organization that serves food and beverages. They are responsible for the daily operation which includes managing budgets and payroll, hiring, training and firing employees, addressing complaints, scheduling staff and assigning duties, ordering supplies and equipment, and ensuring employees comply with health and food safety standards.

Source: U.S. Bureau of Labor Statistics

**How do I get there?** Each career has its own set of education and skill requirements.



## Exhibitors



# Information Technology

## Overview

The professionals in the field of Information Technology work with computer hardware and software and computer networks. The types of work in this field include securing information shared and stored, creation of programs, creation of applications, and design of information systems solutions.

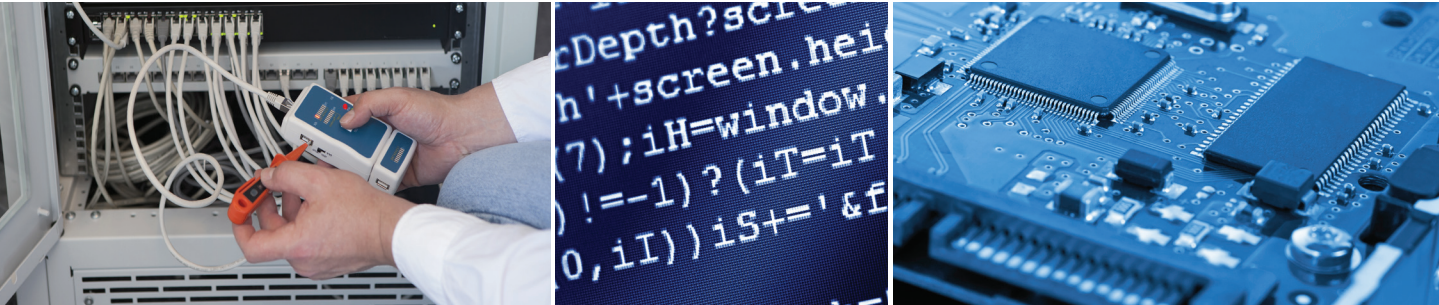


**How much money will I earn?** Your salary or hourly wage depends on a lot of factors, like the education you have, your skills, previous experience in the industry, attitude, and work ethic.

The following chart shares a snapshot of careers, average wages, and education needed.

	Average Annual Wages	Hourly Entry	Hourly Experienced	Education*
Computer Network Architects	\$117,400	\$40.21	\$64.59	4C
Computer Network Support Specialists	\$75,800	\$20.59	\$44.36	CC
Computer User Support Specialists	\$59,500	\$19.75	\$33.01	PS
Electrical and Electronics Engineers	\$111,600	\$36.61	\$62.16	4C
First-Line Supervisors of Mechanics, Installers, and Repairers	\$75,800	\$24.68	\$42.31	HS
Information Security Analysts	\$116,000	\$35.59	\$65.84	4C
Network and Computer Systems Administrators	\$92,000	\$28.20	\$52.27	4C
Project Management Specialists	\$101,100	\$30.48	\$57.67	4C
Software Developers	\$124,500	\$39.19	\$70.21	4C
Telecommunications Line Installers and Repairers	\$60,600	\$23.03	\$32.16	HS

\* HS: High School | PS: Post-Secondary Non-Degree Award | CC: Community College | 4C: Four-Year College | MD: Master's Degree | DP: Doctoral or Professional Degree  
Source: Worlds of Work service area via JobsEQ | 2024Q1





**Do you love:** Problem solving? • Inventing? • Designing? • Creating?

**What it takes:** Strong math, science, written and verbal skills • Focus

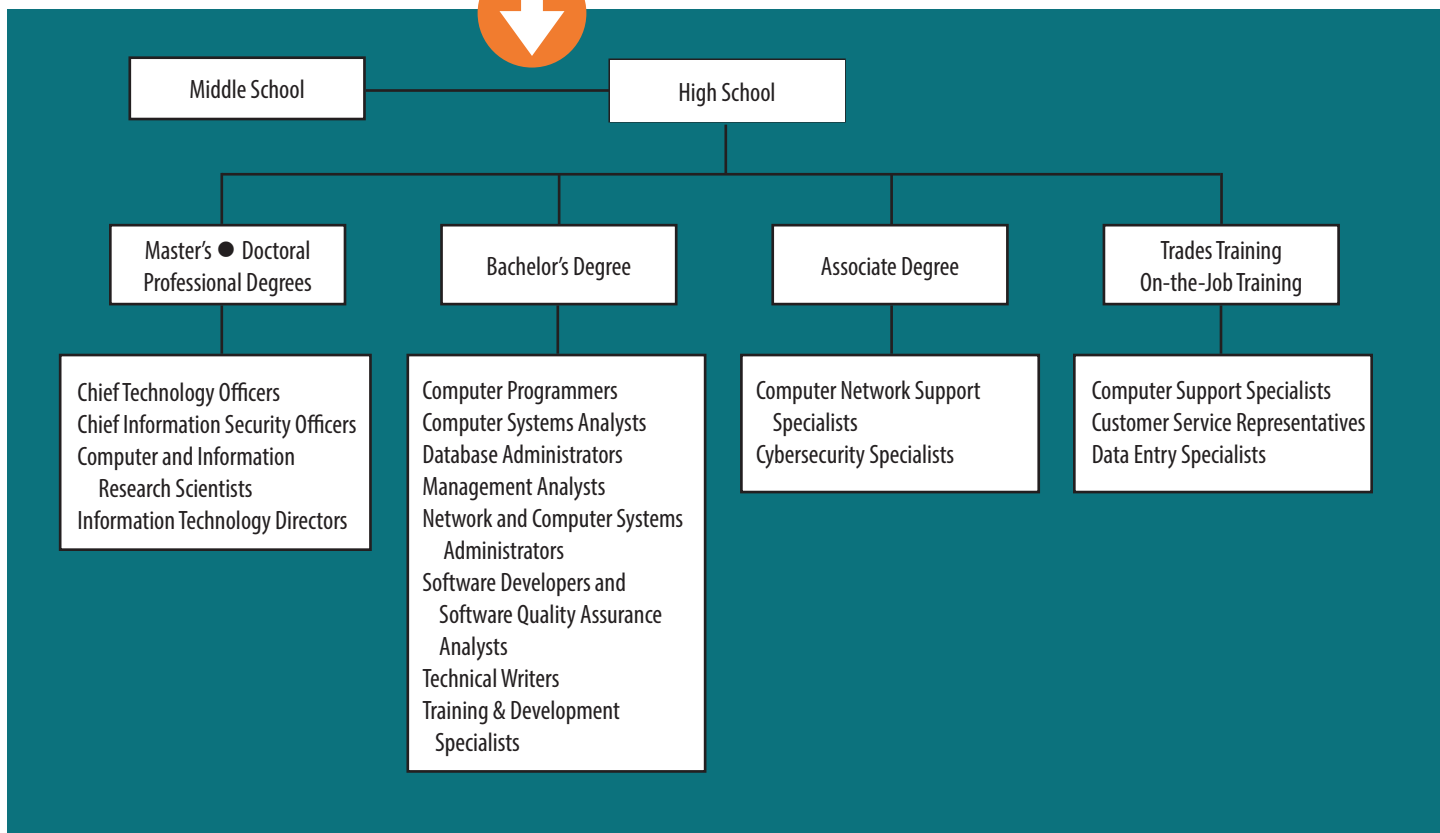


## Career Spotlight Software Developers

The role of a Software Developer is to create and modify computer applications software, or specialized utility programs. They analyze user needs and develop software solutions. Software Developers design software or customize software for client use with the aim of optimizing operational efficiency. They also analyze and design databases within an application area, working individually or coordinating database development as part of a team. Oftentimes, they supervise computer programmers.

Source: U.S. Bureau of Labor Statistics

**How do I get there?** Each career has its own set of education and skill requirements.



## Exhibitors



# Manufacturing

## Overview

This sector is comprised of establishments engaged in the mechanical, physical, or chemical transformation of materials, substances, or components into new products.

Manufacturing is involved in everything you see and use on a daily basis; from buildings, vehicles, furniture, televisions, and smart phones to cereal boxes, cereal, and the spoon you eat with. Manufacturing is where the innovation is!



**How much money will I earn?** Your salary or hourly wage depends on a lot of factors, like the education you have, your skills, previous experience in the industry, attitude, and work ethic.

The following chart shares a snapshot of careers, average wages, and education needed.

	Average Annual Wages	Hourly Entry	Hourly Experienced	Education*
First - Line Supervisors of Production and Operating Workers	\$69,500	\$21.57	\$39.32	HS
Food Batchmakers	\$46,700	\$16.93	\$25.21	HS
Industrial Machinery Mechanics	\$62,000	\$20.63	\$34.41	HS
Industrial Truck and Tractor Operators	\$50,100	\$20.41	\$25.89	HS
Inspectors, Testers, Sorters, Samplers, and Weighers	\$47,700	\$16.52	\$26.11	HS
Laborers and Freight, Stock, and Material Movers	\$40,600	\$15.52	\$21.50	HS
Molding, Coremaking, and Casting Machine Setters	\$37,600	\$13.40	\$20.44	HS
Packaging and Filling Machine Operators	\$45,300	\$14.98	\$25.15	HS
Team Assemblers	\$39,600	\$15.24	\$20.92	HS
General and Operations Managers	\$117,800	\$28.22	\$70.88	4C
Industrial Engineers	\$91,400	\$28.69	\$51.57	4C

\* HS: High School | PS: Post-Secondary Non-Degree Award | CC: Community College | 4C: Four-Year College | MD: Master's Degree | DP: Doctoral or Professional Degree  
Source: Worlds of Work service area via JobsEQ | 2024Q1





**Do you love:** Making your ideas happen? •  
Working with machines and computers?

**What it takes:** Strong math and  
science skills • Excellent problem solving skills



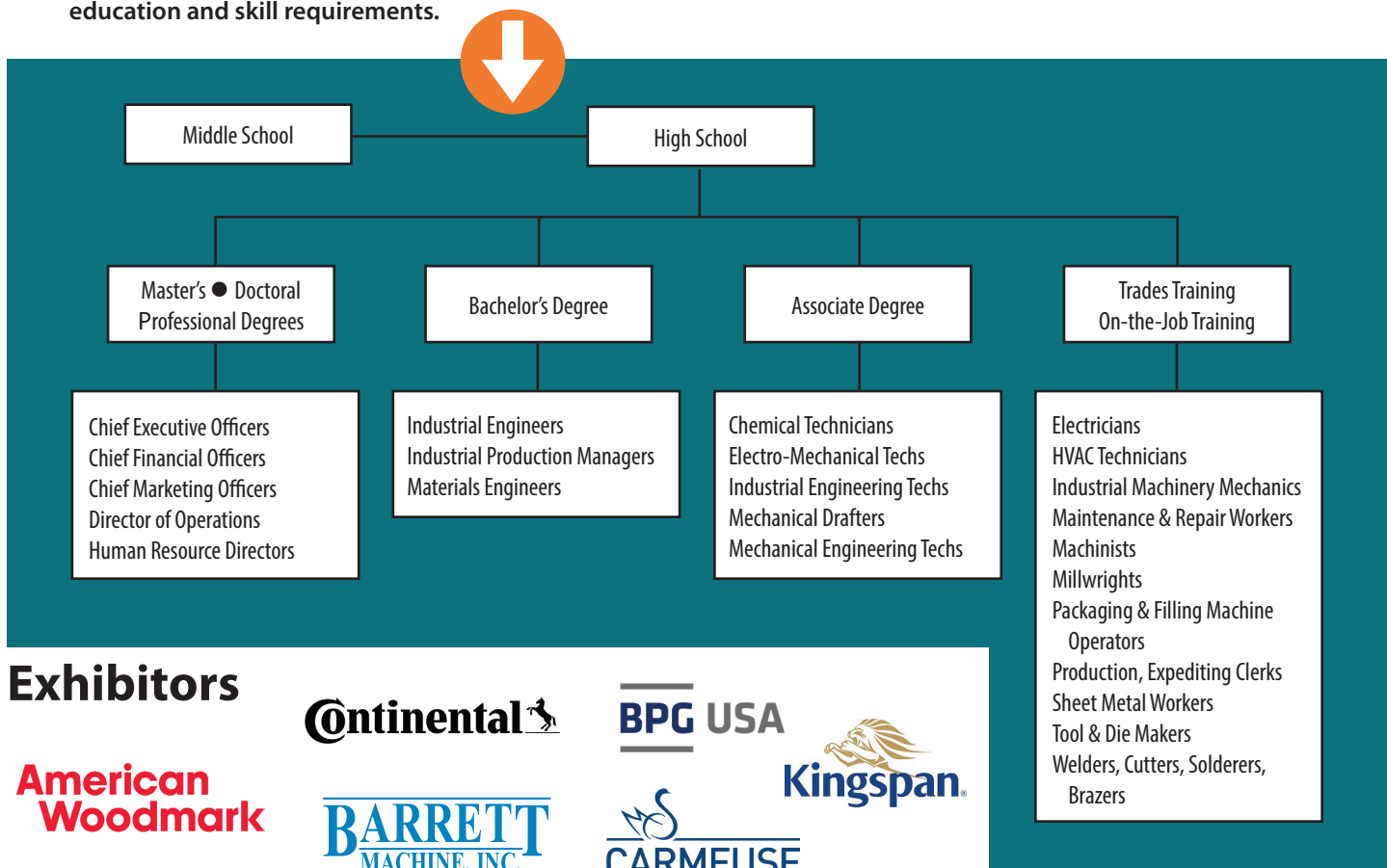
## Career Spotlight

### Industrial Machinery Mechanics

Industrial machinery mechanics and machinery maintenance workers maintain and repair factory equipment and other industrial machinery, such as conveying systems, production machinery, and packaging equipment. Millwrights install, dismantle, repair, reassemble, and move machinery in factories, power plants, and construction sites.

Source: U.S. Bureau of Labor Statistics

**How do I get there?** Each career has its own set of education and skill requirements.



## Exhibitors



# Public Service

## Overview

We need people in public service to help keep communities safe and ensure our society functions in an orderly and just manner.

These careers can vary from entering one of the branches of the military to being a local town councilman or supervisor.

Regardless of the career, military, police, fire and rescue, or public officer, the responsibility of public service means you must be someone of high moral standards with a good work ethic and a passion to help others.



**How much money will I earn?** Your salary or hourly wage depends on a lot of factors, like the education you have, your skills, previous experience in the industry, attitude, and work ethic.

The following chart shares a snapshot of careers, average wages, and education needed.

	Average Annual Wages	Hourly Entry	Hourly Experienced	Education
Compliance Officers	\$73,100	\$23.32	\$41.05	4C
Correctional Officers and Jailers	\$52,000	\$21.04	\$26.99	HS
Eligibility Interviewers, Government Programs	\$49,400	\$19.61	\$25.85	HS
Firefighters	\$47,500	\$15.98	\$26.27	PS
Highway Maintenance Workers	\$45,500	\$17.77	\$23.90	HS
Management Analysts	\$113,000	\$32.56	\$65.20	4C
Office Clerks, General	\$40,600	\$14.04	\$22.24	HS
Police and Sheriffs Patrol Officers	\$60,100	\$24.06	\$31.30	HS
Project Management Specialists	\$101,100	\$30.48	\$57.67	4C
Recreation Workers	\$35,000	\$13.13	\$18.66	HS
Social and Human Service Assistants	\$37,900	\$14.45	\$20.11	HS
Urban and Regional Planners	\$81,400	\$26.64	\$45.41	MD

\* HS: High School | PS: Post-Secondary Non-Degree Award | CC: Community College | 4C: Four-Year College | MD: Master's Degree | DP: Doctoral or Professional Degree  
Source: Worlds of Work service area via JobsEQ | 2024Q1





**Do you love:** Your community and your country? •  
Working on a team? • Helping others?

**What it takes:** Moral principles •  
Dependable performance and attitude



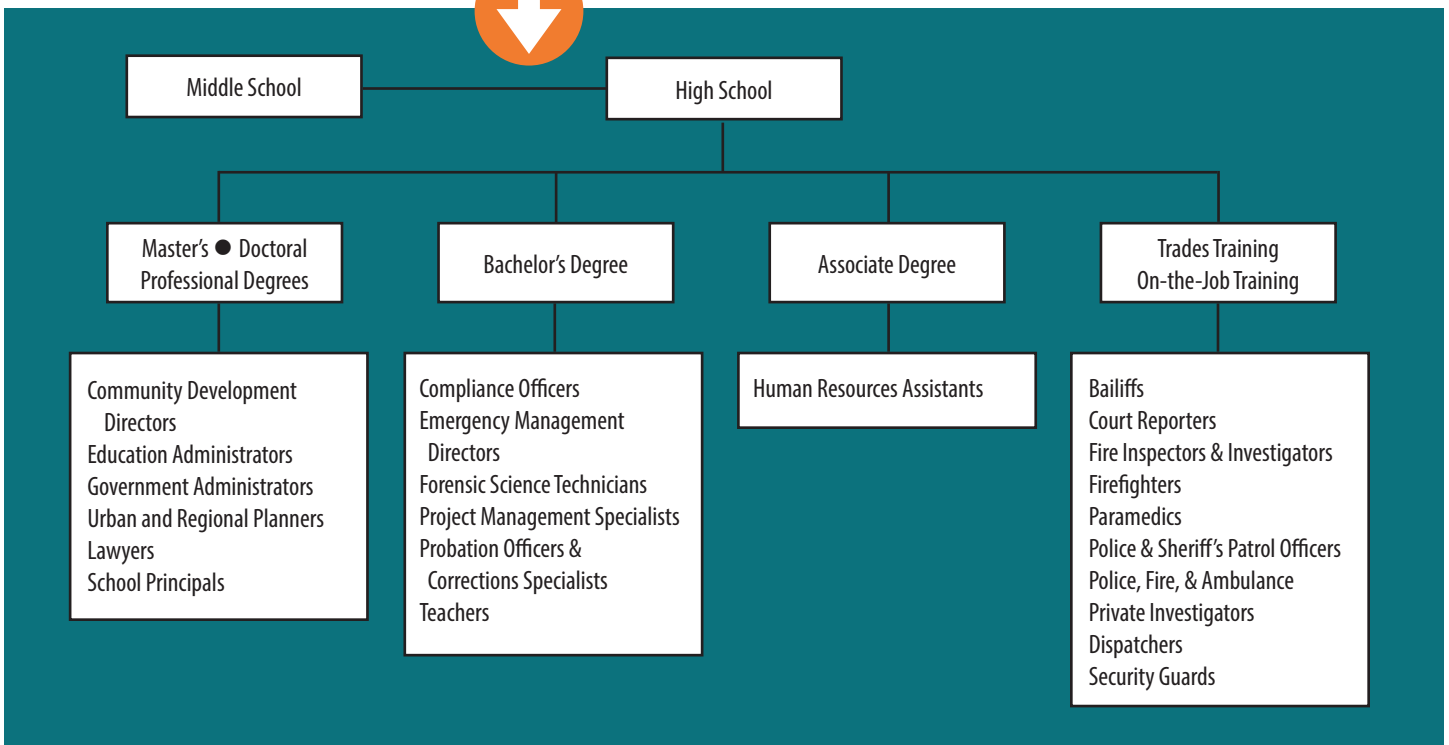
## Career Spotlight

### Police and Sheriff's Patrol Officers

Police maintain order and protect life and property by enforcing local, tribal, State, or Federal laws and ordinances. Officers perform a combination of the following duties: patrol a specific area; direct traffic; issue traffic summonses; investigate accidents; apprehend and arrest suspects, or serve legal processes of courts.

Source: U.S. Bureau of Labor Statistics

**How do I get there?** Each career has its own set of education and skill requirements.



## Exhibitors



# Transportation & Logistics

## Overview

Our world economy and international trade has made the need for quick distribution and logistics evermore important.

A career in transportation and logistics involves the transportation of goods and encompasses the careers like automotive mechanics, shipping clerks, truck drivers and distribution managers.



**How much money will I earn?** Your salary or hourly wage depends on a lot of factors, like the education you have, your skills, previous experience in the industry, attitude, and work ethic.

The following chart shares a snapshot of careers, average wages, and education needed.

	Average Annual Wages	Hourly Entry	Hourly Experienced	Education*
Aircraft Mechanics and Service Technicians	\$75,200	\$24.55	\$41.98	PS
Bus and Truck Mechanics and Diesel Engine Specialists	\$55,900	\$20.17	\$30.22	HS
Cargo and Freight Agents	\$51,100	\$17.87	\$27.92	HS
Customer Service Representatives	\$41,300	\$14.60	\$22.46	HS
First-Line Supervisors of Transportation and Material Moving Workers	\$64,000	\$21.05	\$35.65	HS
Heavy and Tractor-Trailer Truck Drivers	\$54,000	\$19.82	\$29.04	PS
Laborers and Freight, Stock, and Material Movers, Hand	\$40,600	\$15.52	\$21.50	HS
Light Truck Drivers	\$41,800	\$14.33	\$23.01	HS
Logisticians	\$77,800	\$22.84	\$44.67	4C
Office Clerks, General	\$40,600	\$14.04	\$22.24	HS
Transportation, Storage, and Distribution Managers	\$98,800	\$37.52	\$52.51	HS

\* HS: High School | PS: Post-Secondary Non-Degree Award | CC: Community College | 4C: Four-Year College | MD: Master's Degree | DP: Doctoral or Professional Degree  
Source: Worlds of Work service area via JobsEQ | 2024Q1





**Do you love:** Math and problem solving? •  
Fixing things? • Organizing flow?

**What it takes:** Good time  
management skills • Impeccable driving record

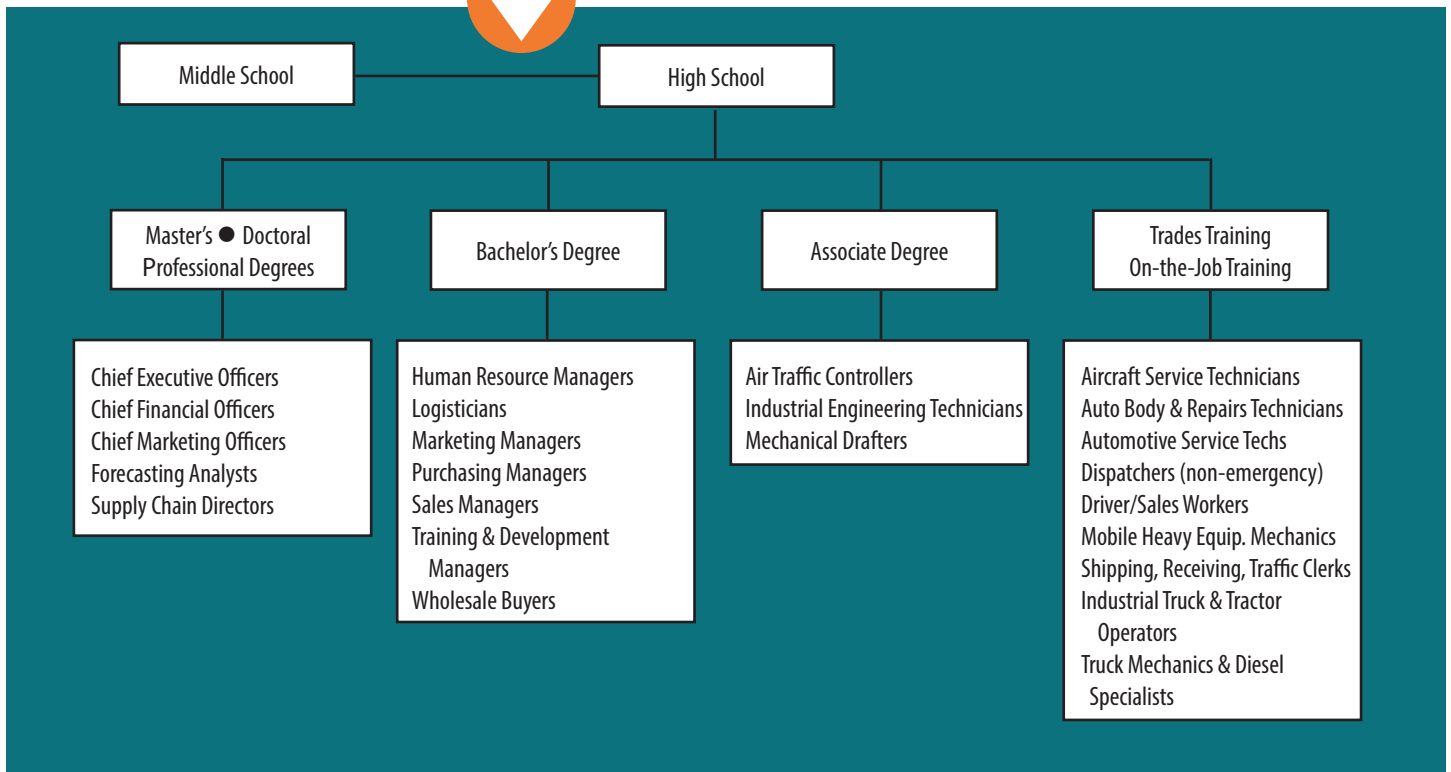


## Career Mobile Heavy Equipment Mechanics

Mobile Heavy Equipment Mechanics adjust, diagnose, repair, or overhaul mobile mechanical, hydraulic, and pneumatic equipment, such as cranes, bulldozers, graders, and conveyors, used in construction, logging, and surface mining. As stock of heavy vehicles and mobile equipment continues to increase, more service technicians will be needed to maintain them. Those who have completed postsecondary education programs should enjoy the best job prospects.

Source: U.S. Bureau of Labor Statistics

**How do I get there?** Each career has its own set of education and skill requirements.



## Exhibitors



# Looking Ahead

## High School Work-Based Learning

High schools often offer work-based learning opportunities where students are paired with a local business to learn valuable career skills while working part-time during the school day. Opportunities range from job shadowing to Registered Apprenticeships.

## High School Career & Technical Education

Successful students in career and technical education have the skills to enter the workforce, enroll in training programs, or excel in a two-year or four-year college program.

**Apprenticeships** Learn a craft or trade from a skilled crafts-person or master trades worker (such as a carpenter or plumber) through supervised, full-time work. Upon the completion of an apprenticeship, you receive a nationally recognized certificate of completion.

**On-the-Job Training** After earning a high school diploma, some graduates immediately start earning money as an entry-level employee. Through on-the-job-training, they are able to learn new skills and gain valuable work experience.

**Military Service** All branches of the U.S. Military provide skills training, financial aid for college, and career opportunities in return for service. Some people choose the military as a long-term career, while others use it to prepare for college or a career in private industry or public service.

**Community Colleges** Affordable community colleges, including technical colleges where students can study fields like automotive technology, culinary arts, and welding, are located in close proximity to all of our participating counties. Earn

credentials or an Associate Degree to prepare for entry into your career or a four-year college or university.

## Four-Year Colleges & Universities

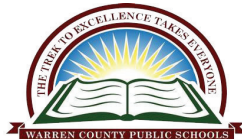
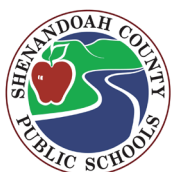
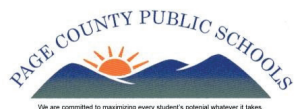
Virginia has numerous public and private colleges and universities. State and federal grant programs are available to students needing financial support.

## Regional Higher Learning Opportunities

- Christendom College
- Laurel Ridge Community College
- Old Dominion University at Laurel Ridge Community College
- Rappahannock Community College
- Shenandoah University



## MANAGED BY



## EXPLORETHEWOW.COM